

### PAUL KWETON

**Office Design Leader, DLR Group**  
Houston, Texas

Paul is an Austrian architect and designer who has been living and working in Houston for the past 16 years. He is currently serving as Office Design Leader at the DLR Group Houston office. He received his bachelor's and master's degrees in architecture and urban planning with honors from the University of Technology in Vienna and a Master of Architecture at Rice University. Since joining DLR Group, he has led design on educational projects, workplace environments, and cultural institutions. His professional accomplishments include international, state and local design awards. In the past, Paul also has served as adjunct professor and co-coordinator at the professional level at the University of Houston, College of Architecture and Design. He has taught design studios at both undergraduate and graduate level, as well as undergraduate thesis.

### JILL LECKNER

**Principal, SLAB Architecture**  
**Instructor, University of Kentucky**  
Lexington, Kentucky

Jill is a registered architect in New York, New Jersey and Kentucky and is a LEED Accredited Professional. She received her Master of Architecture in 1995 from Columbia University and her Bachelor of Architecture in 1993 from Ball State University. As co-principal of SLAB, Leckner has extensive architectural design and construction experience in the New York City area with over 25 years of professional practice experience. The office has completed multiple award-winning projects ranging from large commercial office renovations to art galleries, music performance venues and urban design proposals. Since 2016, Leckner has been teaching both undergraduate and graduate courses at the University of Kentucky College of Design. Leckner brings her extensive knowledge of design and construction to the classroom and shares her expertise with the students on a variety of project types and scales. Leckner's teaching emphasizes the importance of design research, site history, conceptual narratives and the poetic intersection of the built environment and nature in a quest to produce meaningful architectural form and space.

### VANDANA NAYAK

**Southwest Regional Practice Leader, Education Practice**  
**Perkins&Will**  
Dallas, Texas

Having worked with educational clients for more than two decades, Vandana has a unique ability to understand her clients' intentions and aspirations beyond simply listening to the words they say. She can navigate through the many voices, create a clear vision, and translate that into a built facility that exceeds expectations. She has successfully led many innovative, forward-thinking projects that have received national recognition. Vandana's favorite part of a project is planning and programming – when clients have a dream, but they don't yet know the full possibility of what it can be. She and her husband live in Coppell, Texas, and are proud parents of two boys. Vandana is a member of the American Institute of Architects and the Association for Learning Environments.

### JEFF VANDEL

**Executive Director of Facilities**  
**North Kansas City School District**  
Kansas City, Missouri

As executive director of facilities, Jeff manages all aspects of



design and construction at North Kansas City Schools. At 21,000 students, it is the second largest school district in Missouri. There, he works with world-class design teams to create sustainable and equitable state-of-the-art facilities for all students. Prior to his position at North Kansas City Schools, Jeff served as the director of planning, design, and construction for the University of Missouri-Kansas City, and has served two terms as a school board member in his local district. Jeff is a graduate of Kansas State University, holding a degree in Architectural Engineering. In addition to being a licensed Professional Engineer, Jeff is a LEED Accredited Professional, a Certified Energy Manager, and a Certified Educational Facility Professional. Additionally, he is a member of the Association of Physical Plant Administrators (APPA) and the Association For Learning Environments (A4LE).

### MARIA WELCH

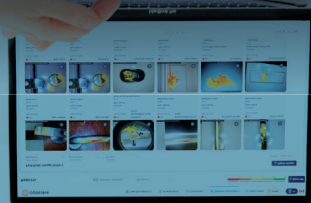
**Design Specialist, Associate, Bray Architects**  
Milwaukee, Wisconsin

As a design specialist, architect, and associate at Bray Architects, Maria has worked on over a dozen K-12 schools, developing solutions that cultivate unique learning environments, solve functional concerns, and celebrate each school's identity. Maria holds a Master of Architecture and a Bachelor of Science in Architectural Studies from the University of Wisconsin-Milwaukee. In 2020, she was recognized as a Rising Young Professional by The Daily Reporter.



all from one cloud-based platform:  
digital reporting, precision cleaning and surface testing  
environmental monitoring tools and assessments with  
reactive facility management, replacing traditional  
Obtisolive enables managers to become proactive then

**improve cleaning  
productivity up to 30%**



**STAR REGISTERED**  
**CBAC**

**obtisolive.net**  
**picture clean at**

