

INSIDE INFO

In June, a group of architects and education administrators came together via videoconferencing to review dozens of school designs entered in AS&U's 2022 Educational Interiors Showcase. After narrowing the field to those they deemed most impressive, the five jurors, who work in various capacities in the world of education facility design and construction, chose the K-12 and higher education projects they determined to be worthy of Citations.

Prior to their deliberations, the jurors identified some of the criteria they would be mindful of as they evaluated the submitted projects:

- Clarity and execution of the design.
- The shape and scale of a space and how people interact in it.
- How well furnishings function within a space.
- Flexibility and adaptability that support student well-beng.
- How a space promotes collaboration and community
- How well different design elements work together
- The quality of light in a space; access to daylighting
- Accessibility
- How a space integrates technology



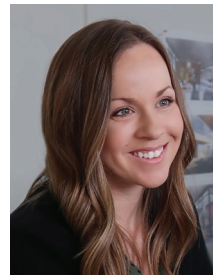
Rachel Adams



Katherine Berger



Karen Jackson



Kandis Larsen



Gerald Morgan

WHAT THE JURY SAID:

"The building is rich with student-centric spaces that offer student choice and encourage collaborative interactions. The spaces have a high quality and aesthetic that is complemented by the materials, finishes and furnishings" p. 14-15

"Nice space planning that allows for seamless transition from individual study to group study. The furnishings and finishes create a

dynamic environment that most likely energizes student interaction and experiences." p. 16-17

"The quality and variety of spaces, and the quality of experiential graphics offer students agency and a variety of ways to foster community among their peers. The project extends the sphere of learning beyond the normal school facilities and hours." p. 18-19